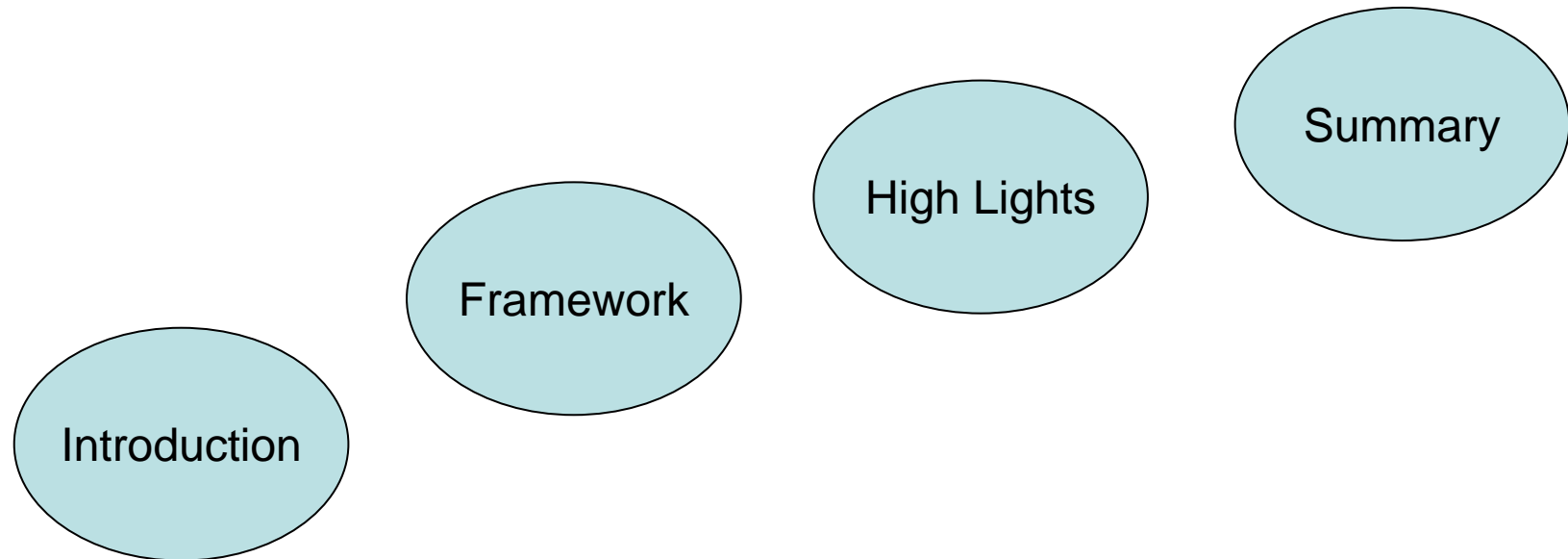


Generic Facilities Data Management and Analytical Framework

Kerstin Kleese van Dam

Outline



What is SciTech?

Formed on the 1st of April 2007 through a merger of the Council for the Central Laboratories of the Research Councils (CCLRC), the Particle Physics and Astronomy Research Council (PPARC) and Nuclear Physics Responsibility from the Engineering and Physical Sciences Research Council (EPSRC).

The Science and Technology Facilities Council supports Research in the UK through grant funded programmes and the provision of Large scale Facilities.

What does SciTech Do?

Provision of World Class Facilities:

ISIS, SRS, Central Laser Facilities, HPCx, Tier1 Centre, National Grid Service, Chilbolton Observatory, UK Astronomy Technology Centre, ISAAC Newton Group of Telescopes (La Palma), Joint Astronomy Centre (Hawaii).

Give access to World Class Facilities Overseas:

CERN, ESA, ESO, ESRF, ILL

Who is Involved?

The development of the Generic Facilities Data Management and Analysis Framework is and has been a collaborative activity involving many groups and facilities world wide:

ISIS, CLF, SRD, DLS, SNS (OakRidge), ESRF, ILL, through Australian Universities the Australian Synchrotron and Canadian Light Source.

Joint Goals

Enable more and better Science at Facilities:

By working together collaboratively.

By creating a powerful, long lasting scientific knowledge resource for academia

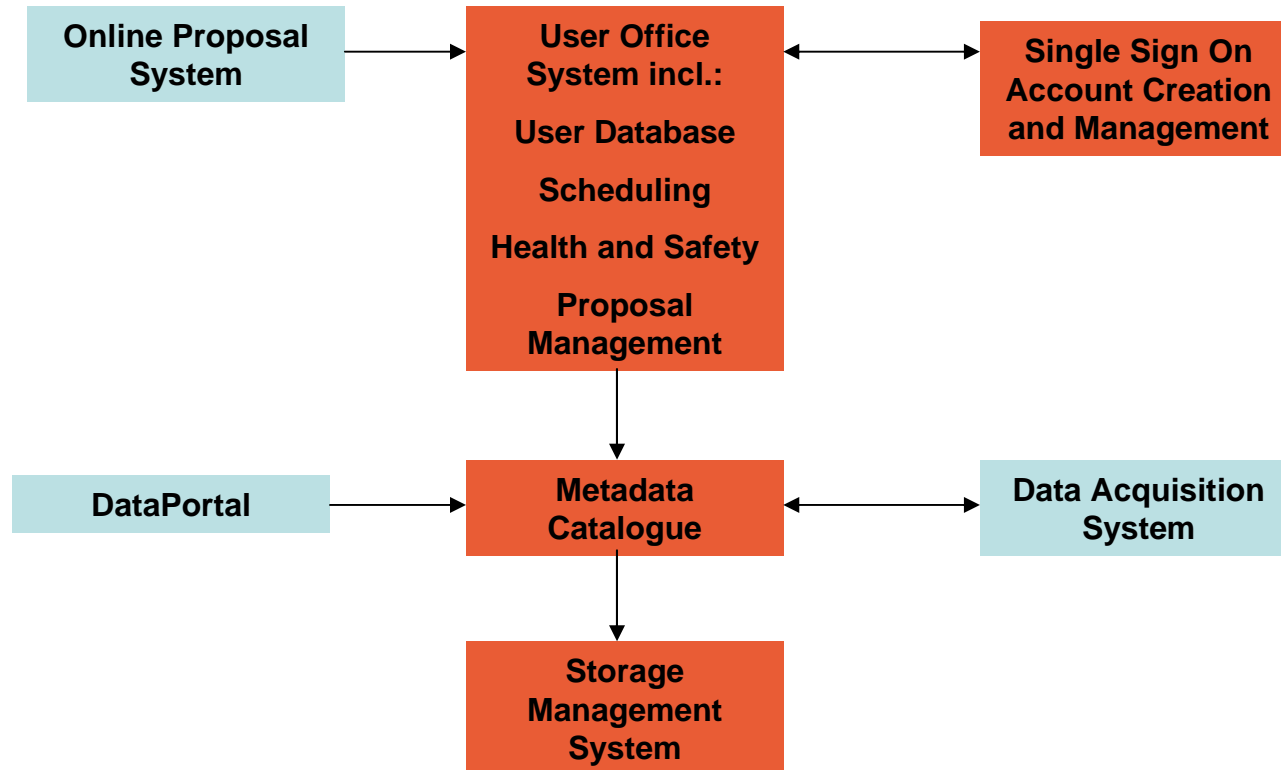
By enabling users to get rapid access to their current and past data, related experiments, publications etc., leading to improved analysis through more complete information

By allowing scientist to start from a higher knowledge level, ‘standing on the shoulders of giants’ (Newton).

By providing an integrated Infrastructure for Data and Analysis to further collaboration between facilities and users.

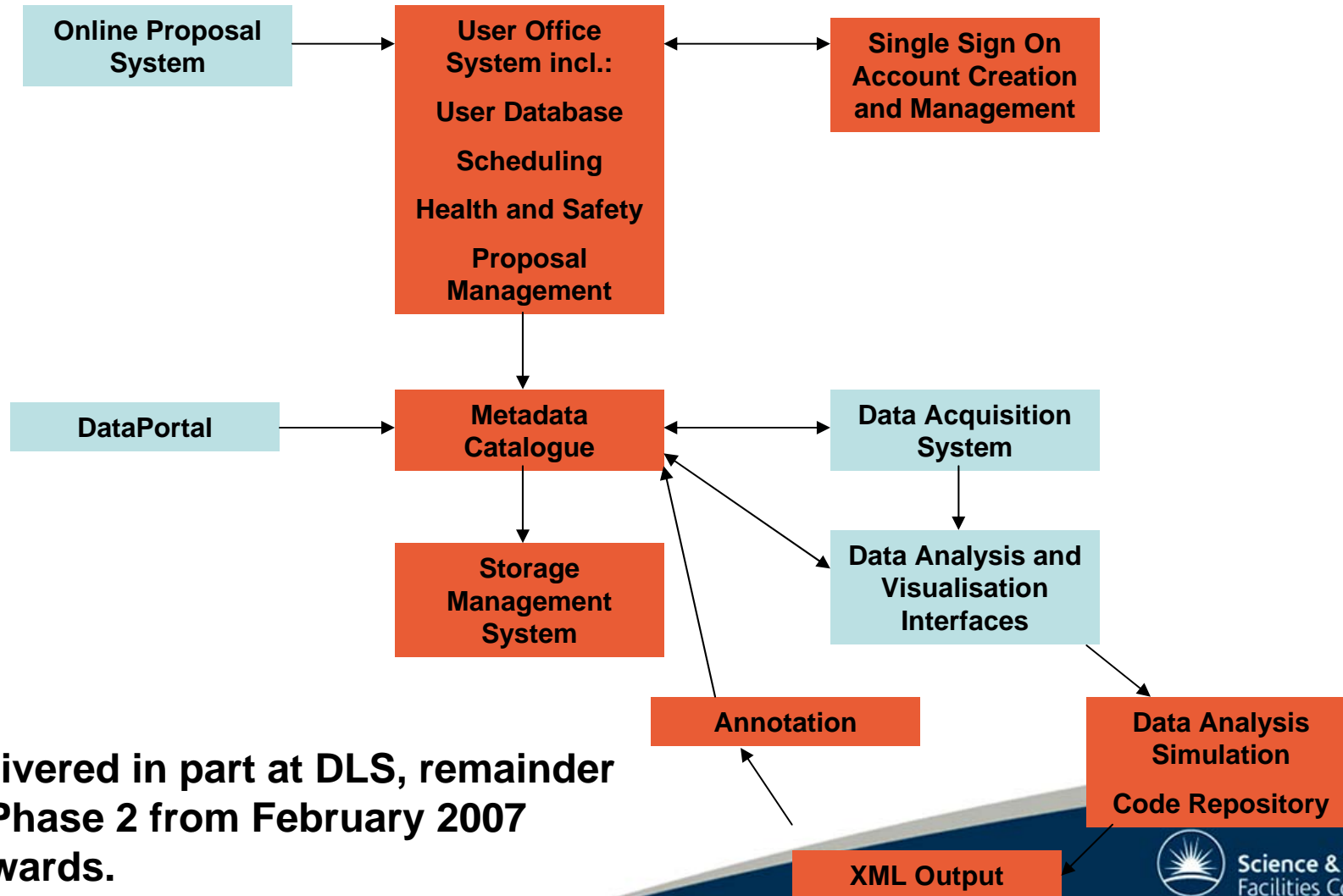


Data Infrastructure



Delivered at DLS

Data and Analysis Infrastructure



Delivered in part at DLS, remainder in Phase 2 from February 2007 onwards.

Highlights

ISIS/CLF/SRD/DLS:

- Common Metadata Format agreed.
- **Use/will use metadata Catalogue - ICAT**
- Agreement on usage of NEXUS Data Format.
- **Use/will use the ISIS Proposal System**
- Agreement on Single Sign on use
- **Use SRB and Petabyte Datastore**



Highlights (2)

ISIS – 20 year back catalogue of raw data

DLS – the ESC Data infrastructure is currently being deployed for the first 7 Beamlines incl. Single Sign on.

SciTech, SNS, ESRF, ILL - Collaborations established to support the collaboration of users across facilities.

Summary

The framework is custom made to fit the requirements of Facilities and their users.

The framework is modular and flexible, allowing for phased deployment and customisation.

We are always happy to engage with new groups and facilities and are interested in new ideas. **If you are interested please feel free to contact us:**
k.kleese@dl.ac.uk